

FED. DIST. NO.	STATE	U.S.P.W. PROJ. NO.	FISCAL YEAR	SHEET NO.	TOTAL SHEETS
6	ARK.	191C	1935	1	6

State Job 11091

STATE OF ARKANSAS
STATE HIGHWAY COMMISSION

INDEX OF SHEETS

QUANTITIES

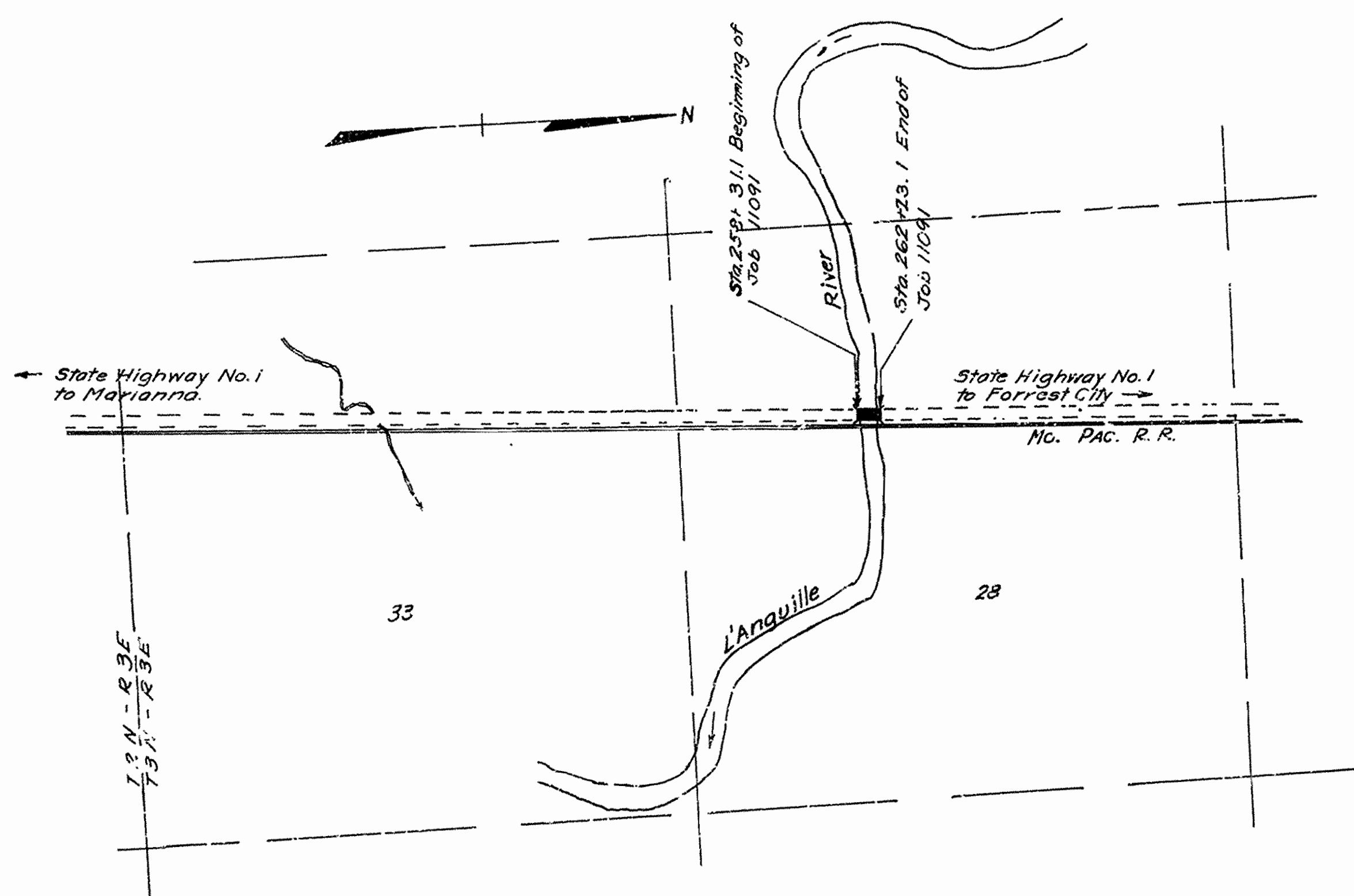
Sheet No.	Drawing No.	Title Sheet
1	3890	Title Sheet
2	3891	Layout of Present Bridge Showing Old and New Work
3	3892	Details of Present Pier Tops, Approach Spans & New Bent Stay Bracing
4	3893	Details of Flared Approach Spans & Changes on Piers
5	3894	Details of 24'-0" Standard I-Beam Span
6	3895	Details of Bridge Name Plates

PLAN OF PROPOSED RECONSTRUCTION
AND RAISING OF BRIDGE
OVER L'ANGUILLE RIVER

Item No.	Description	Quantity	Unit
91	Class 5 Concrete for Bridges	156	Cu Yds
92	Reinforcing Steel for Bridges	3,170	Lbs.
94	Concrete Railing for Bridges	488	Lin. Ft.
97	Treated Bridge Timber	7,587	M.F.B.M.
98	Treated Timber Piling	2,300	Lin. Ft.
98	Treated Timber Pile Cutoff	108	Lin. Ft.
S.P.	Removing Present Approaches and Raising 150 Ft. Steel Span		Lump Sum
S.P.	Cleaning and Painting 150' Steel Span		Lump Sum
96	Structural Steel in Beam Spans	99,000	Lbs.
S.P.	Bronze State Bridge Name Plates	2	Each
98	Timber Test Piles	3	Each

LEE COUNTY
ROUTE 1 SEC. 10
JOB NO 11091

U.S. PUBLIC WORKS PROJECT NO. N.R.H. 191C



Specifications approved by Chief, Bureau of Public Roads, September 28 1925, and adopted by State Highway Commission May 30, 1925 with revisions and Special Provisions as follows:

Item	Date	Approved
Pamphlet A Revised	Mar. 1st, 1931	Approved June 13th, 1931
E Revised	Nov. 1st, 1930	
F Revised	July 1st, 1928	Approved Nov. 24th, 1928
F Revised	Jan. 1st, 1928	
F Revised	Aug. 1st, 1923	
G Revised	June 1st, 1928	
H Revised	Nov. 1st, 1930	
I Revised	Jan. 1st, 1928	Approved June 1st, 1928
K		
L Revised	Feb. 10th, 1933	
M	Mar. 1st, 1931	Approved June 13th, 1931
N	Oct. 1st, 1933	
O	Oct. 1st, 1923	
P	Oct. 1st, 1933	

SPECIAL PROVISIONS

Item	No. of Sheets	Date
Subletting, Labor and NRA Code Compliance	12	8-9-34
Beginning & Prosecution of Work	1	
Bronze Proj. Marker Pils. & Bronze State Br. Name Plates	1	3-10-33
Engineers Field Office	1	8-23-33
Cleaning and Painting 150 Ft. Steel Span	1	9-5-34
Removing Present Approaches and Raising 150 Ft. Steel Span	1	9-5-34

LAYOUT

Item	Value
LENGTH OF PROJECT	= 392.0 FT. = 0.074 MILES
LENGTH OF BRIDGES	= 392.0 FT. = 0.074 MILES
LENGTH OF EMBANKMENT	=
LENGTH OF JOB	= 392.0 FT. = 0.074 MILES

APPROVED
CHIEF ENGINEER - U. S. BUREAU OF PUBLIC ROADS

APPROVED
DISTRICT ENGINEER - U. S. BUREAU OF PUBLIC ROADS

APPROVED
CHIEF - U. S. BUREAU OF PUBLIC ROADS

APPROVED
STATE HIGHWAY ENGINEER

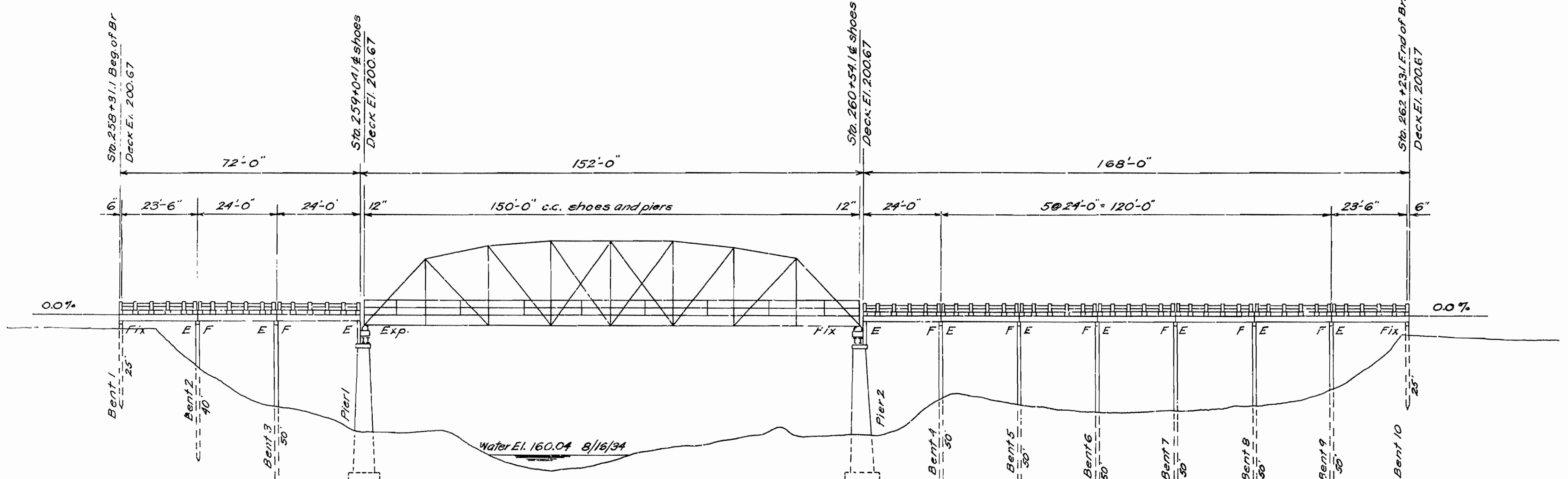
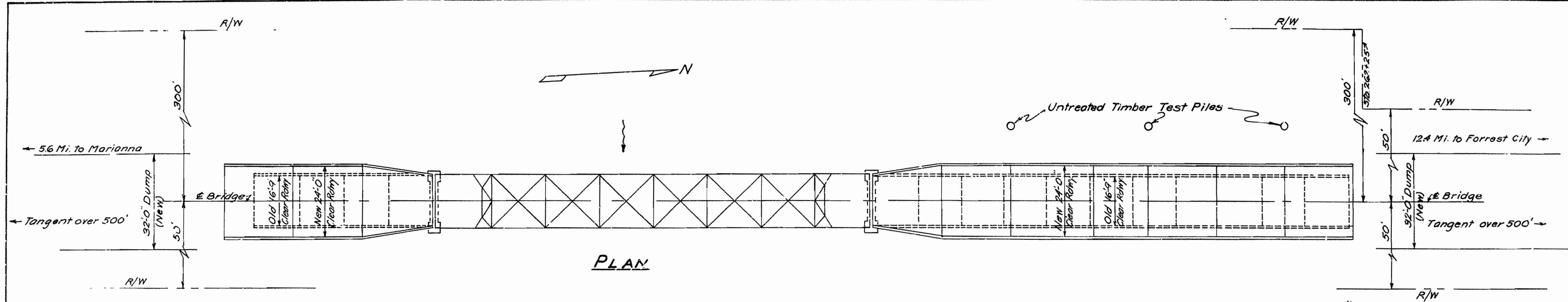
N.B. Shaw
BRIDGE ENGINEER

BRIDGE No. 265 1/2

DRAWING No. 3890

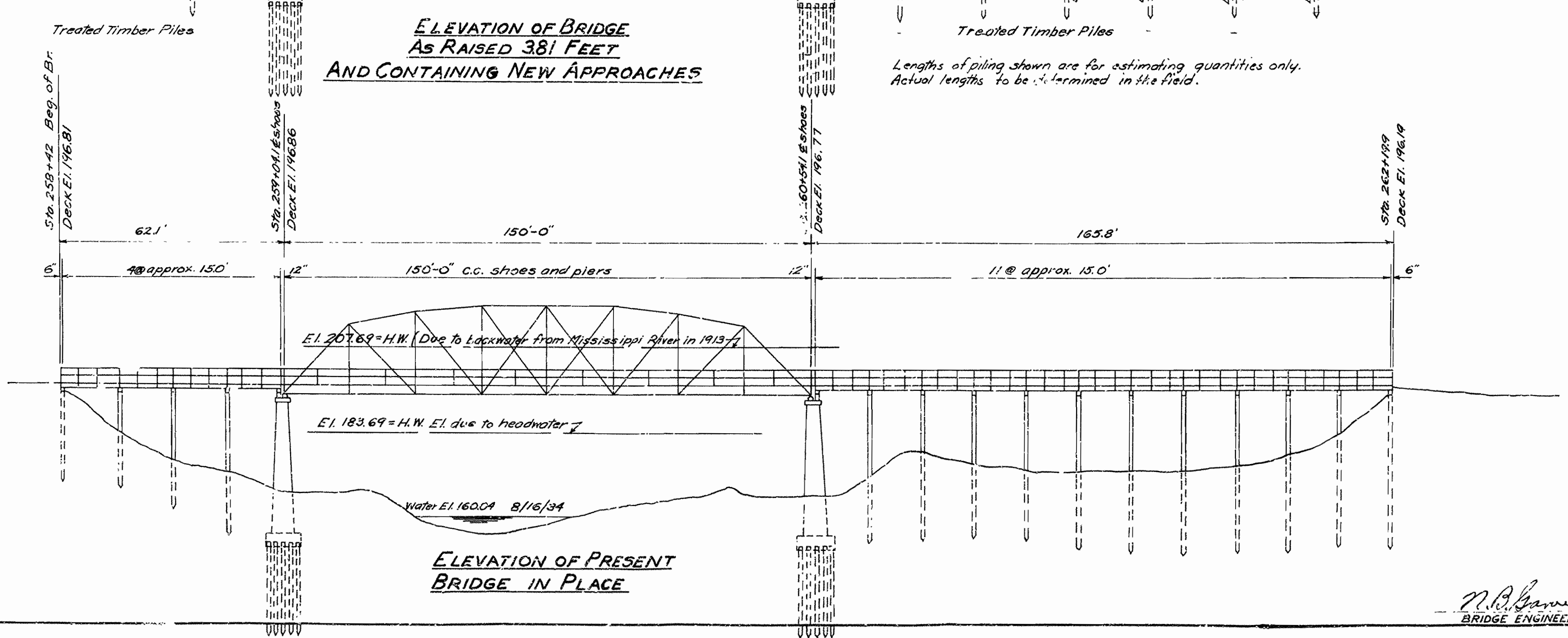
FED. ROAD DIST. NO.	STATE	U. S. R. W. PROJ. NO.	FISCAL YEAR	SHEET NO.	TOTAL SHEETS
6	ARK.	NRH 191C	1935	7	1

State Job 11091



Work to be done:
 Remove old approaches complete.
 Raise steel span and place new grillages and bearing plates.
 Break off old concrete pier risers and build new risers to new elevation.
 Drive new bents and build new approaches.
 Clean and paint 150' steel span.

Lengths of piling shown are for estimating quantities only.
 Actual lengths to be determined in the field.



LAYOUT OF PRESENT BRIDGE
 SHOWING OLD AND NEW WORK.
 BRIDGE OVER LANGUILLE RIVER
 BETWEEN MARIANNA & FORREST CITY
 LEE COUNTY, ARK.
 ROUTE 1 SEC. 10

ARKANSAS STATE HIGHWAY COMMISSION
 LITTLE ROCK, ARK.

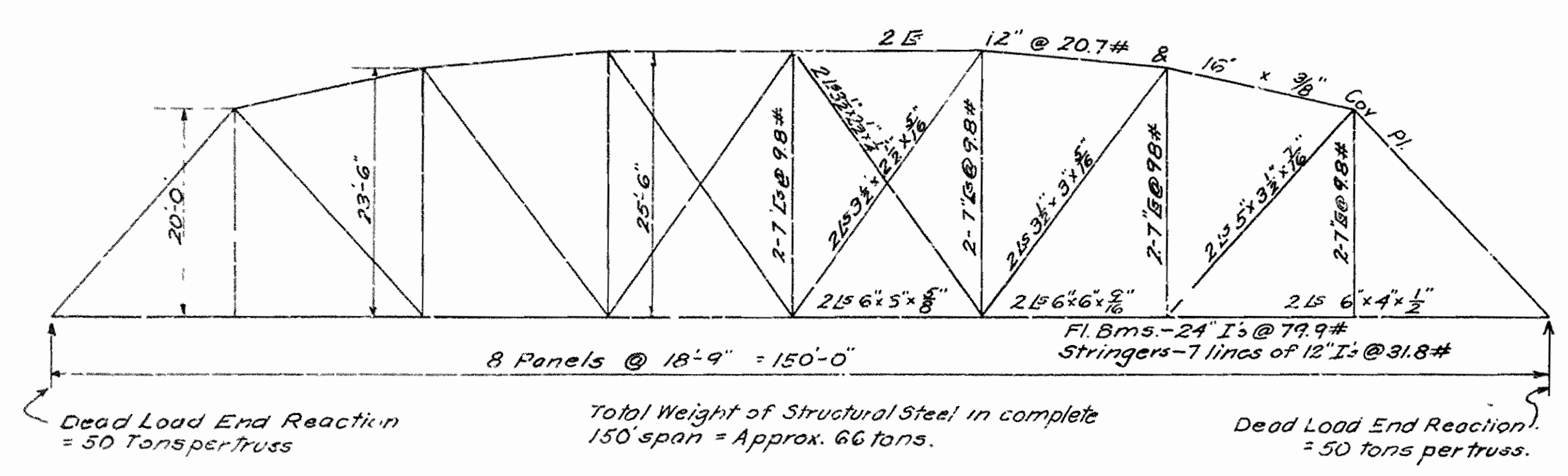
Drawn By: B.V. Date: 8-27-34 Scale: 1"=20'-0"

BRIDGE No. 265 1/2 DRAWING No. 3891

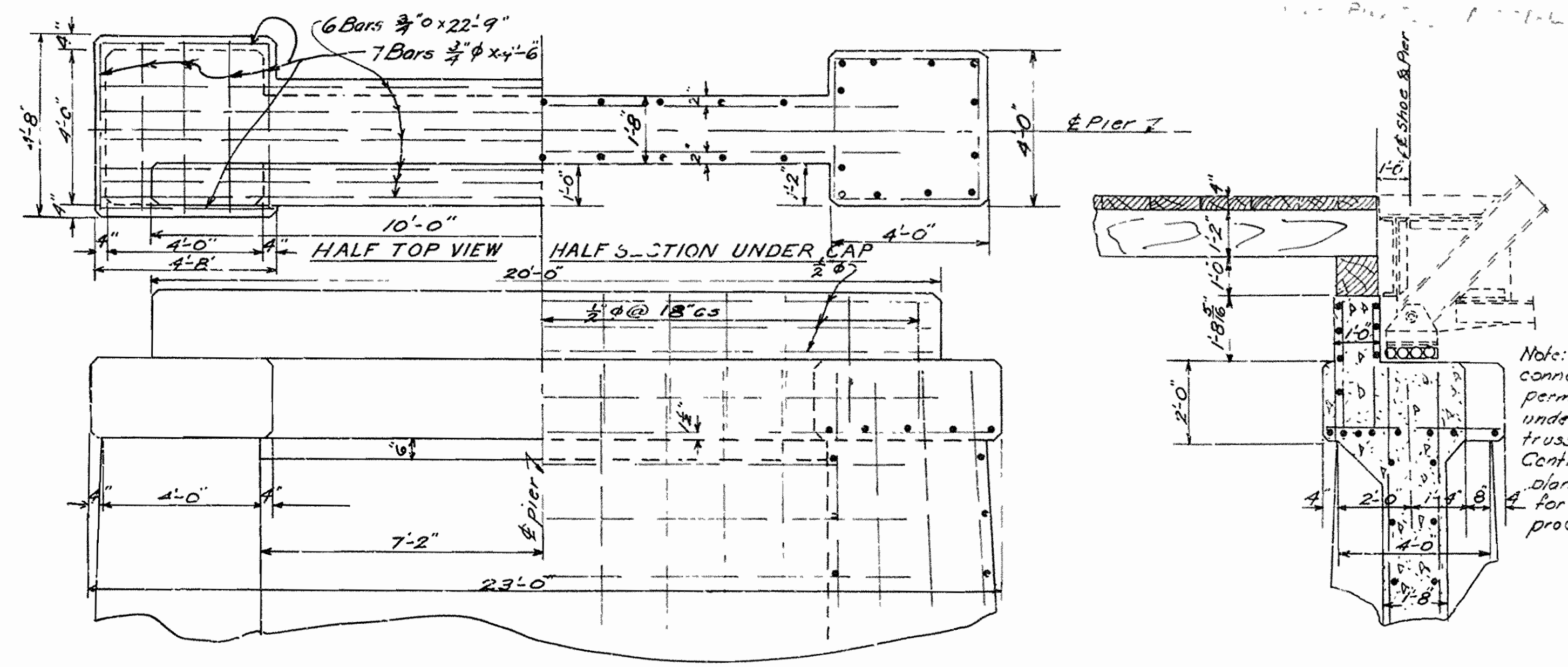
M.A. Banner
 BRIDGE ENGINEER

FED. ROAD DIST. NO.	STATE	PROJ. NO.	FISCAL YEAR	SHEET NO.	TOTAL SHEETS
6	ARK.	N.R.H. 121 C	1935	7	12

State Job 11091

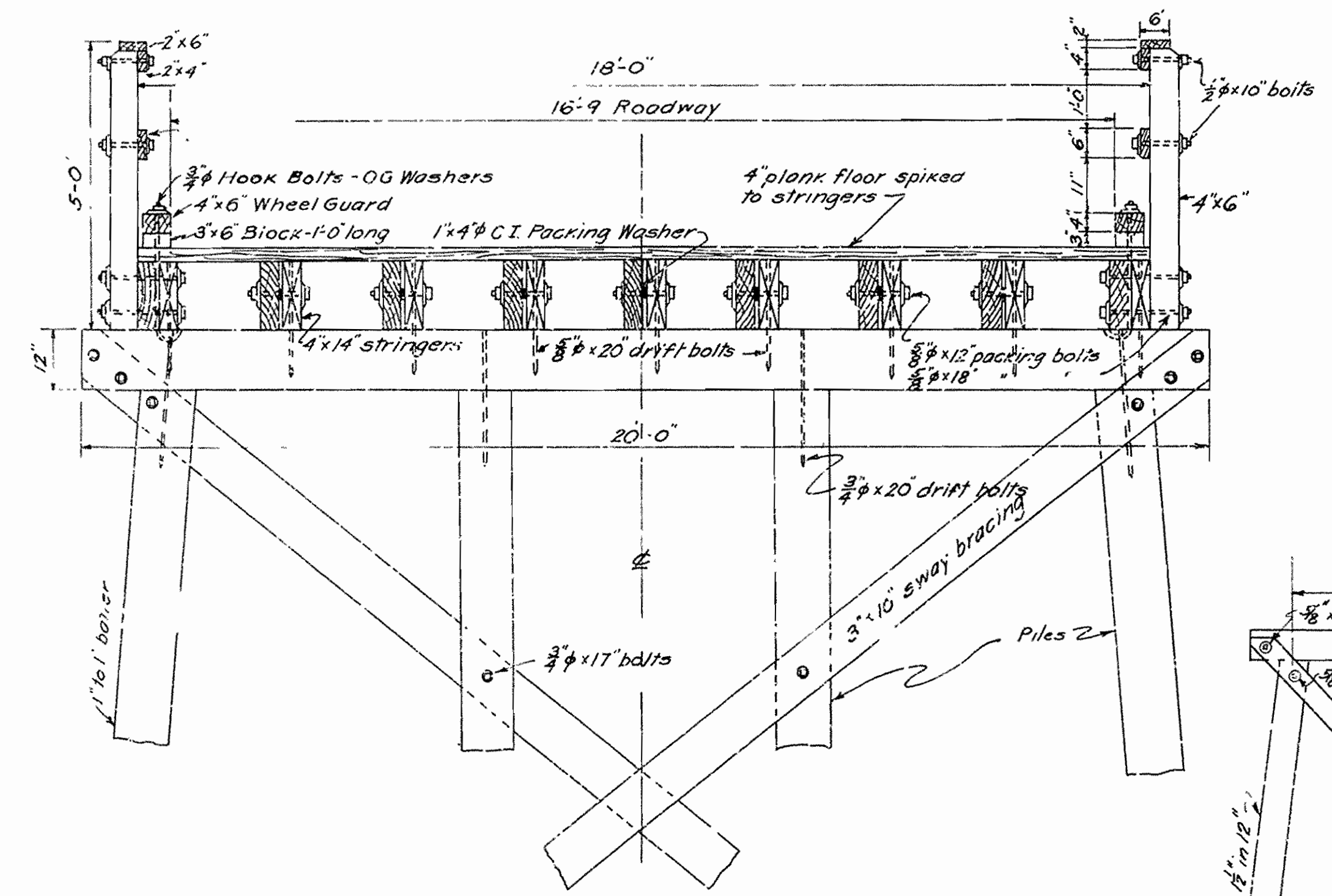


STEEL SPAN TRUSS DIAGRAM

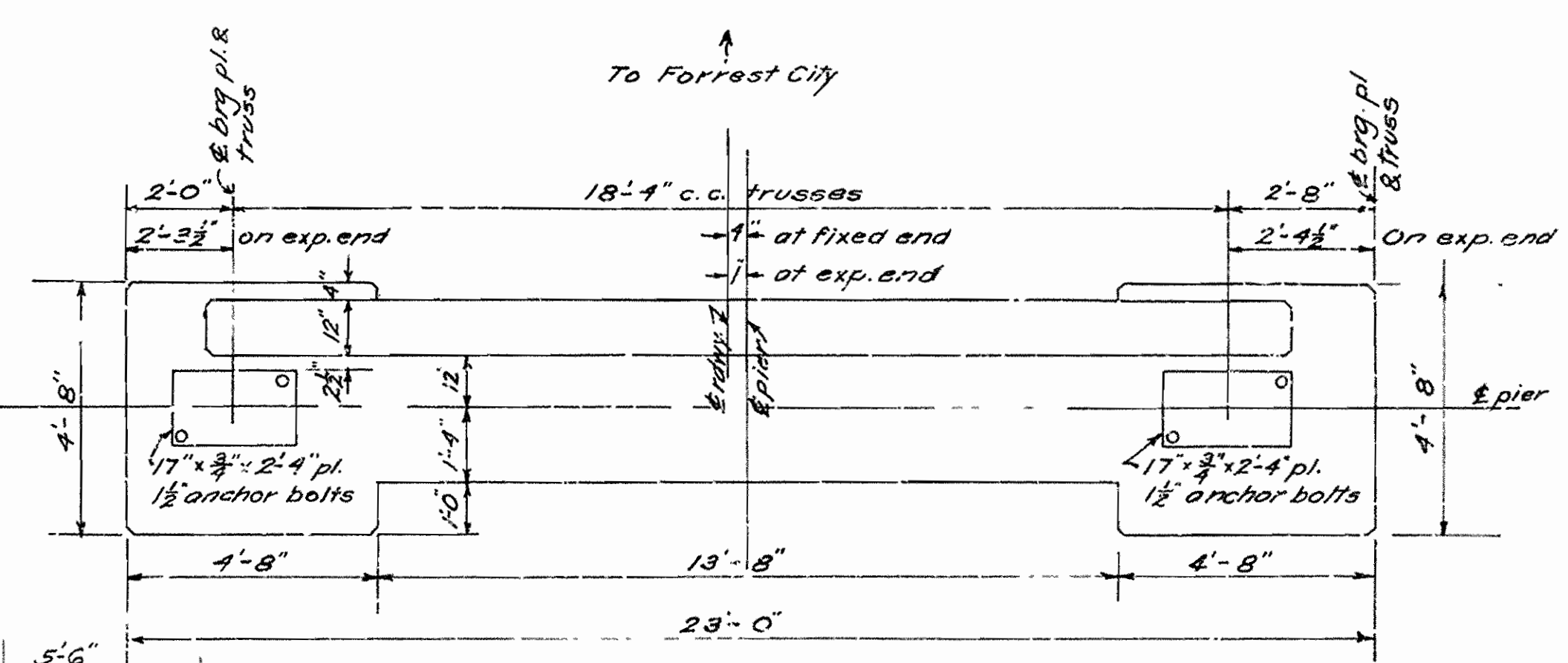


HALF ELEVATION HALF SECTION SECTION ON PIER

Note: End floor beam connections will not permit use of jacks under beams for raising truss span. Contractor to submit plan for raising span for approval before proceeding with work.

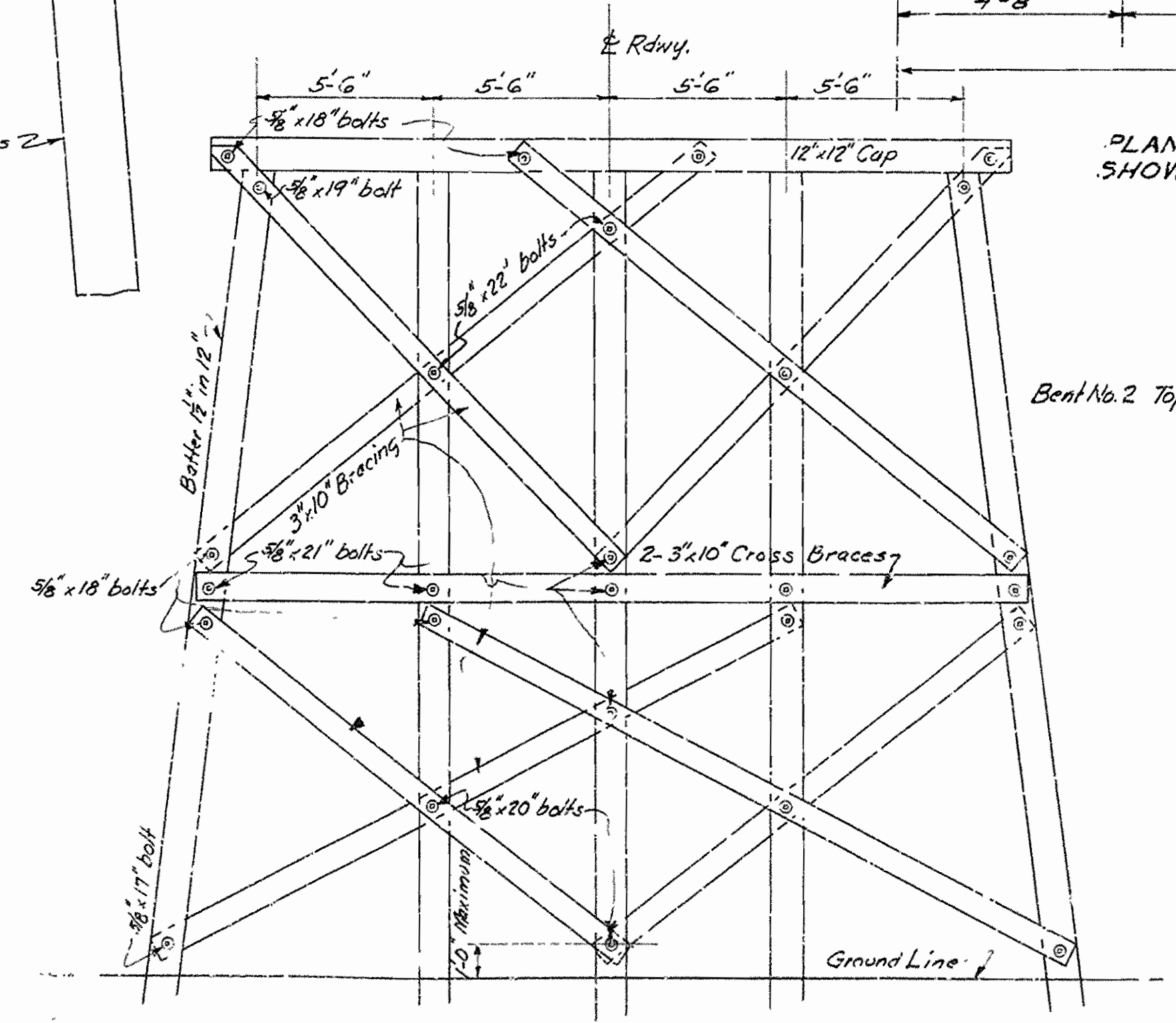


TYPICAL SECTION OF PRESENT APPROACH SPANS TO BE REMOVED
Scale: 1/2" = 1'-0"



PLAN VIEW OF FIXED END PIER TOP SHOWING LOCATION OF BEARING PLATES.
DETAILS OF PIER TOPS.
Scale: 3/8" = 1'-0"

Note: See Drawing No. 3893 for details of piers as raised.



ELEV. OF NEW BENTS SHOWING SWAY BRACING BENTS 3 TO 9 INCL.
Scale: 1/4" = 1'-0" For General Notes See Draw. No. 2149

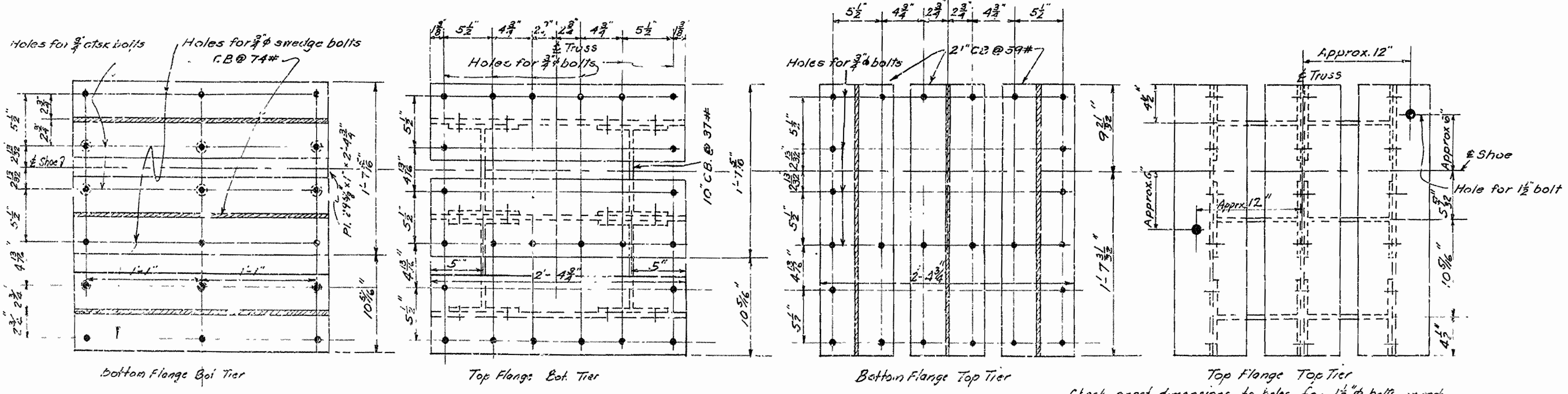
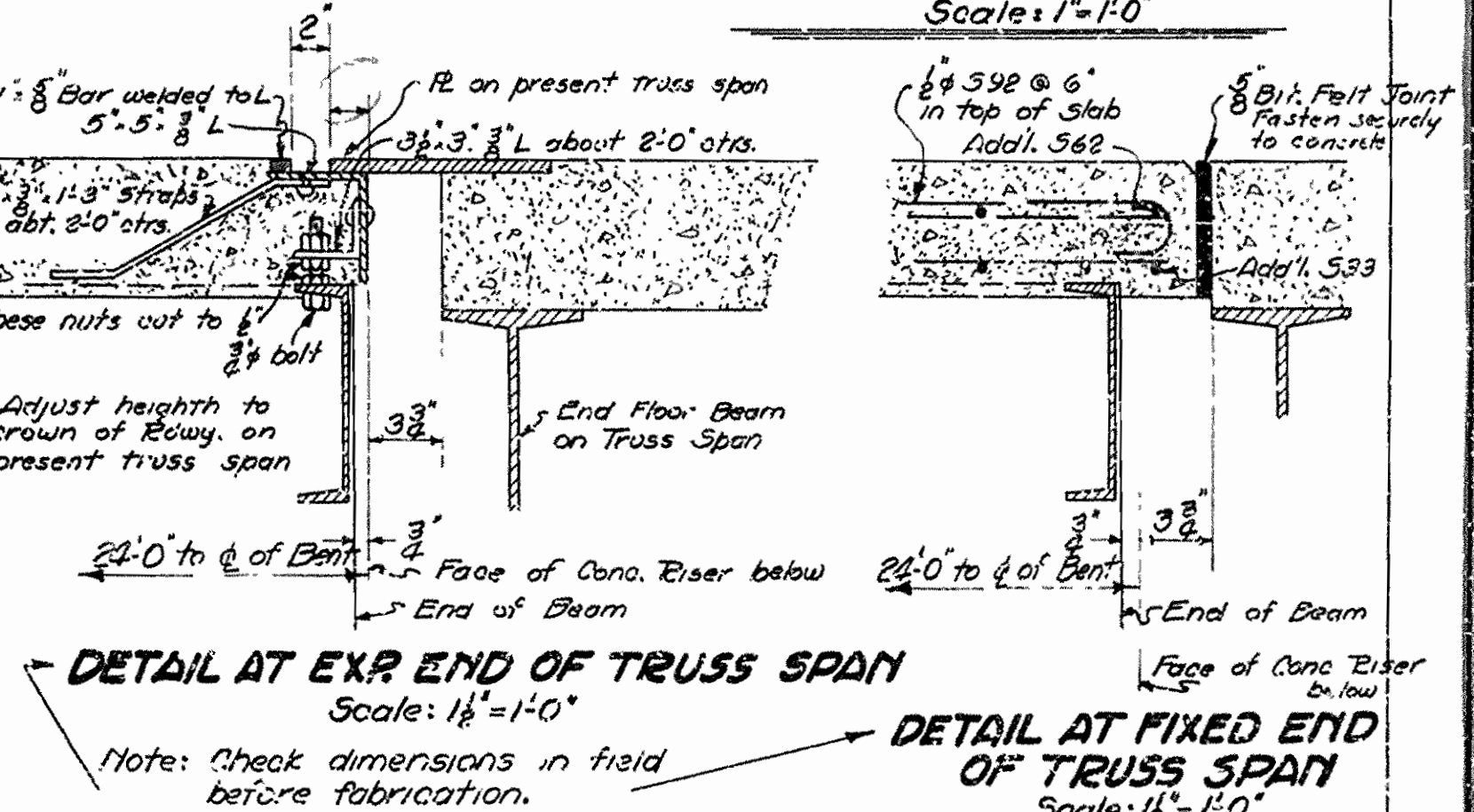
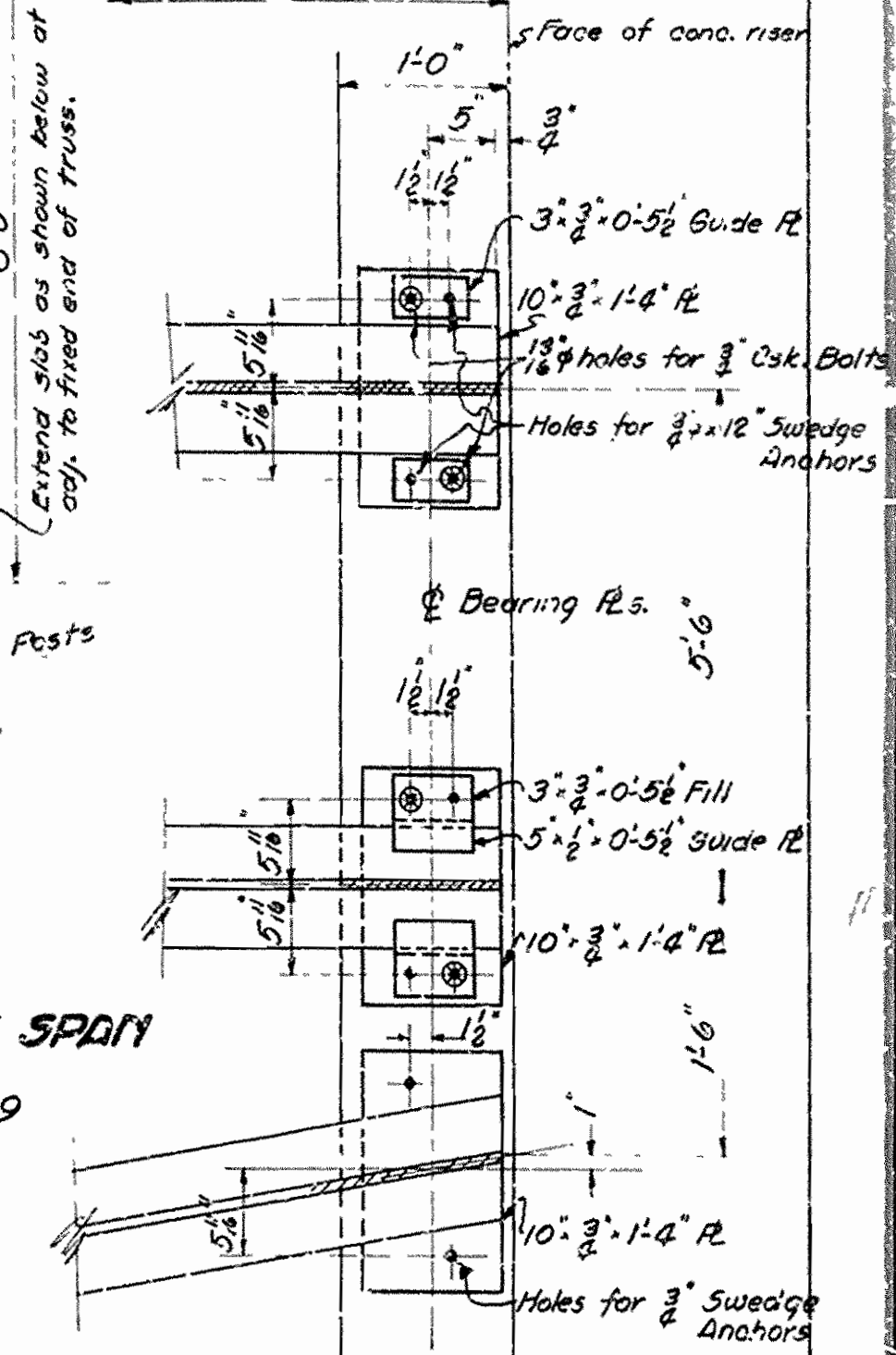
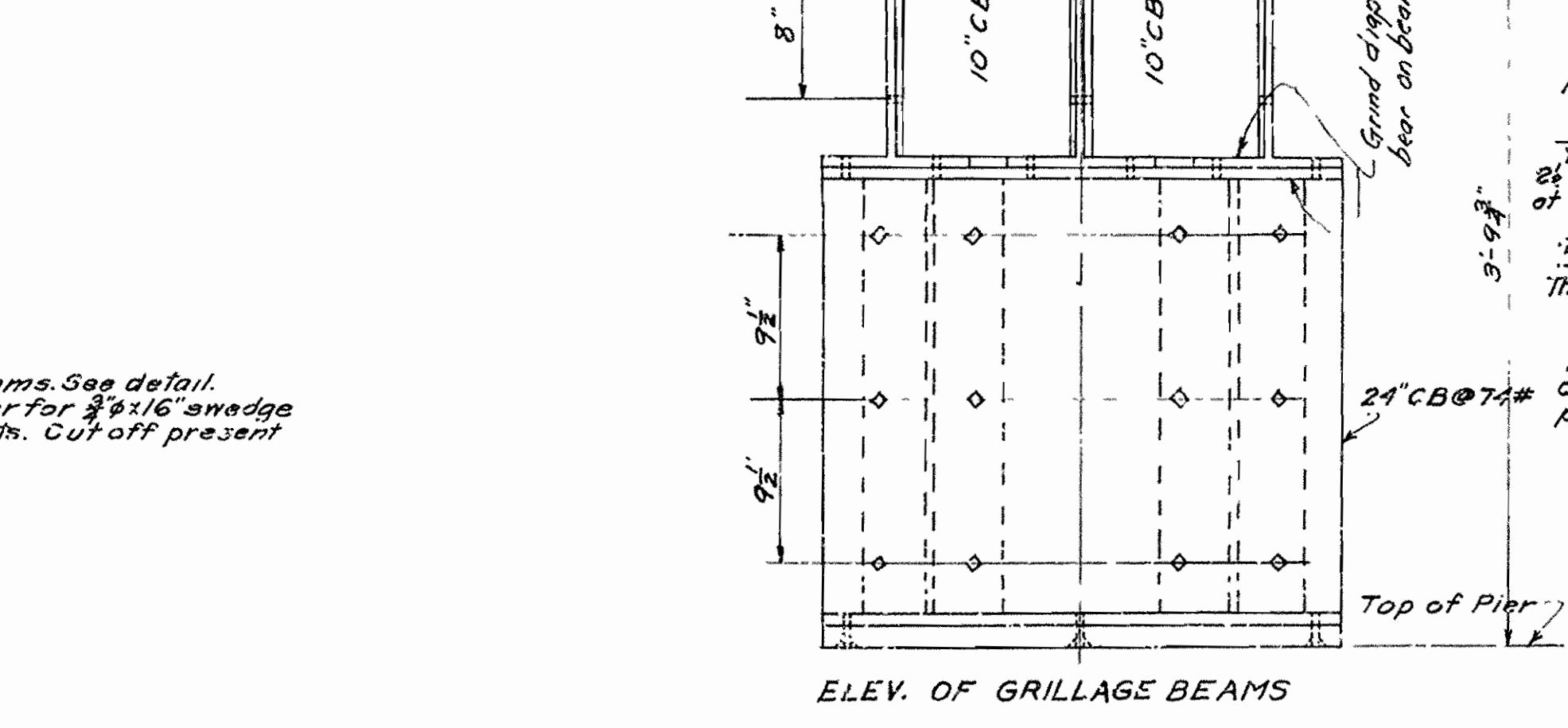
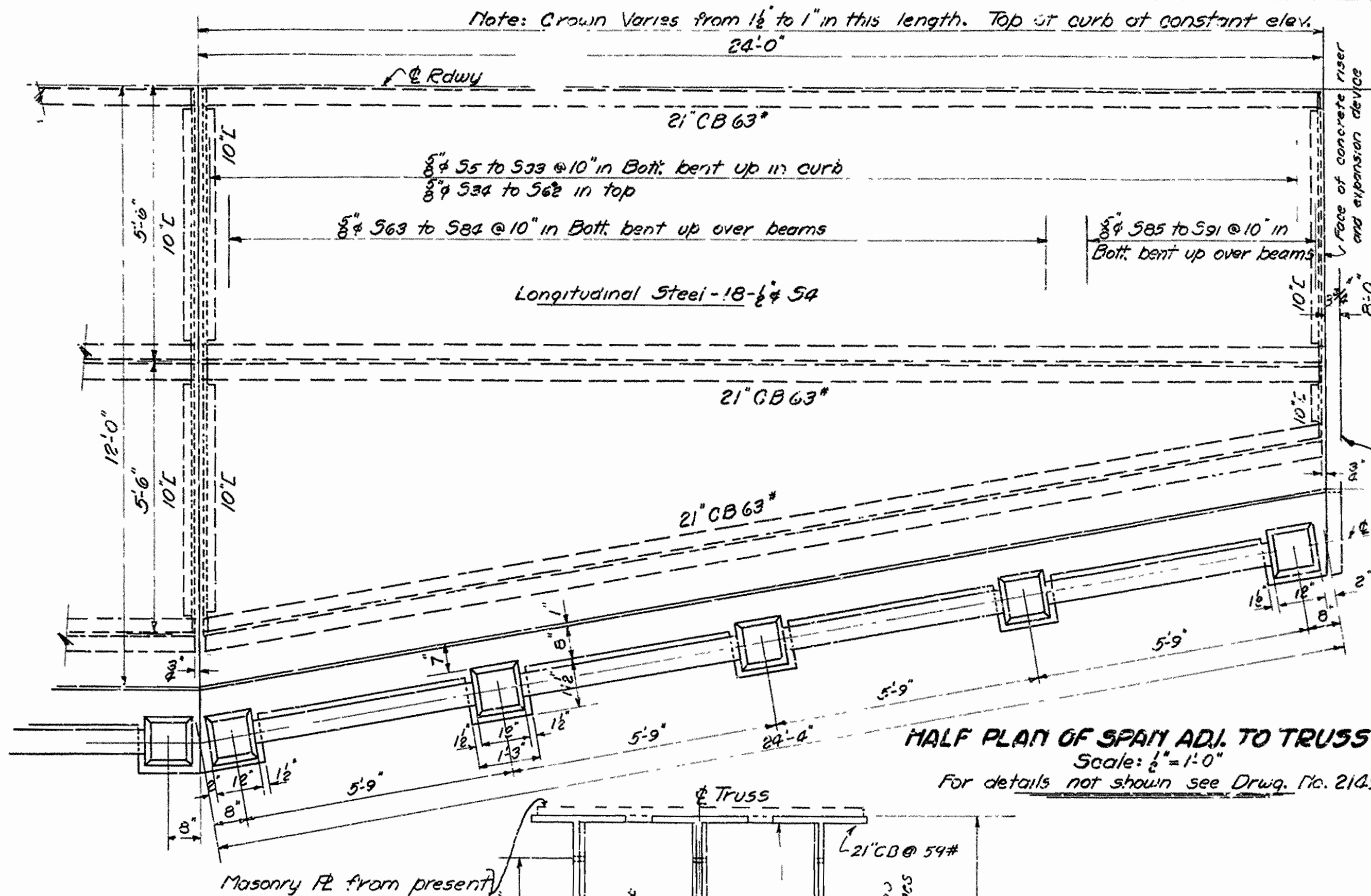
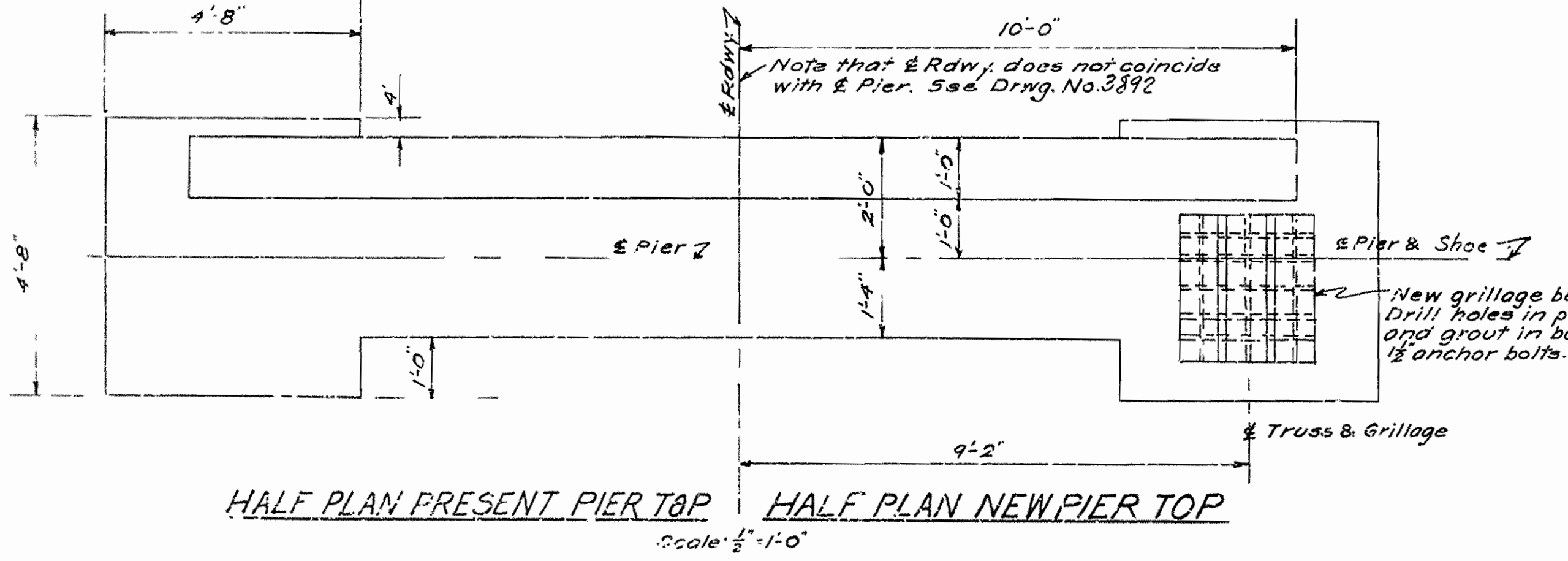
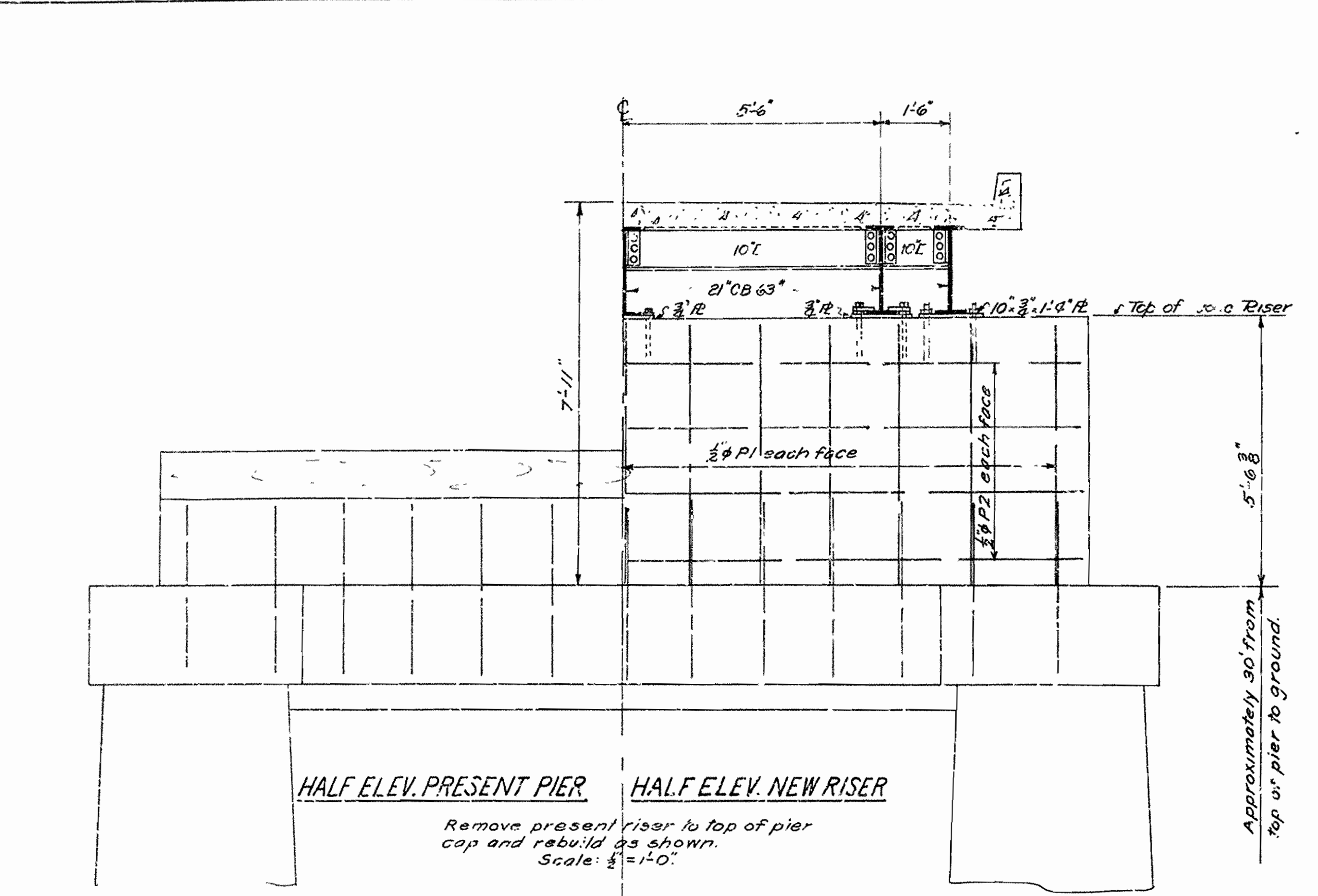
SWAY BRACING FOR BENTS 3 TO 9 INCL. & DETAILS OF PRESENT PIER TOPS AND APPROACH SPANS.
BRIDGE OVER L'ANGUILLE RIVER BETWEEN MARIANNA & FORREST CITY LEE COUNTY, ARK.
ROUTE 1 SEC. 10

ARKANSAS STATE HIGHWAY COMMISSION
LITTLE ROCK, ARK.
Drawn By: B.V. Date: 8-21-34
Traced By: Date:
Checked By: Date:
Scale: As shown
BRIDGE NO. 265 1/2 DRAWING NO. 3892

M.B. Harvey
BRIDGE ENGINEER

FED. DIST. NO.	STATE	PROJ. NO.	FISCAL YEAR	SHEET NO.	TOTAL SHEETS
6	ARK.	NRH 1910	1935	10	15

State Job 11091



Mark	Size	Length	Bending Diagram
55 to 533	5/8"	Av. Lgth. 22'-9"	Varies 12'-9" to 23'-6"
534 to 582	5/8"	Av. Lgth. 21'-9"	
563 to 584	5/8"	Av. Lgth. 23'-6"	Varies 17'-1" to 24'-11"
585 to 591	5/8"	Av. Lgth. 19'-3"	
592	1/2"	2'-6"	Varies 3'-0" to 3'-6"

Dimensions are o.t.o. of bars

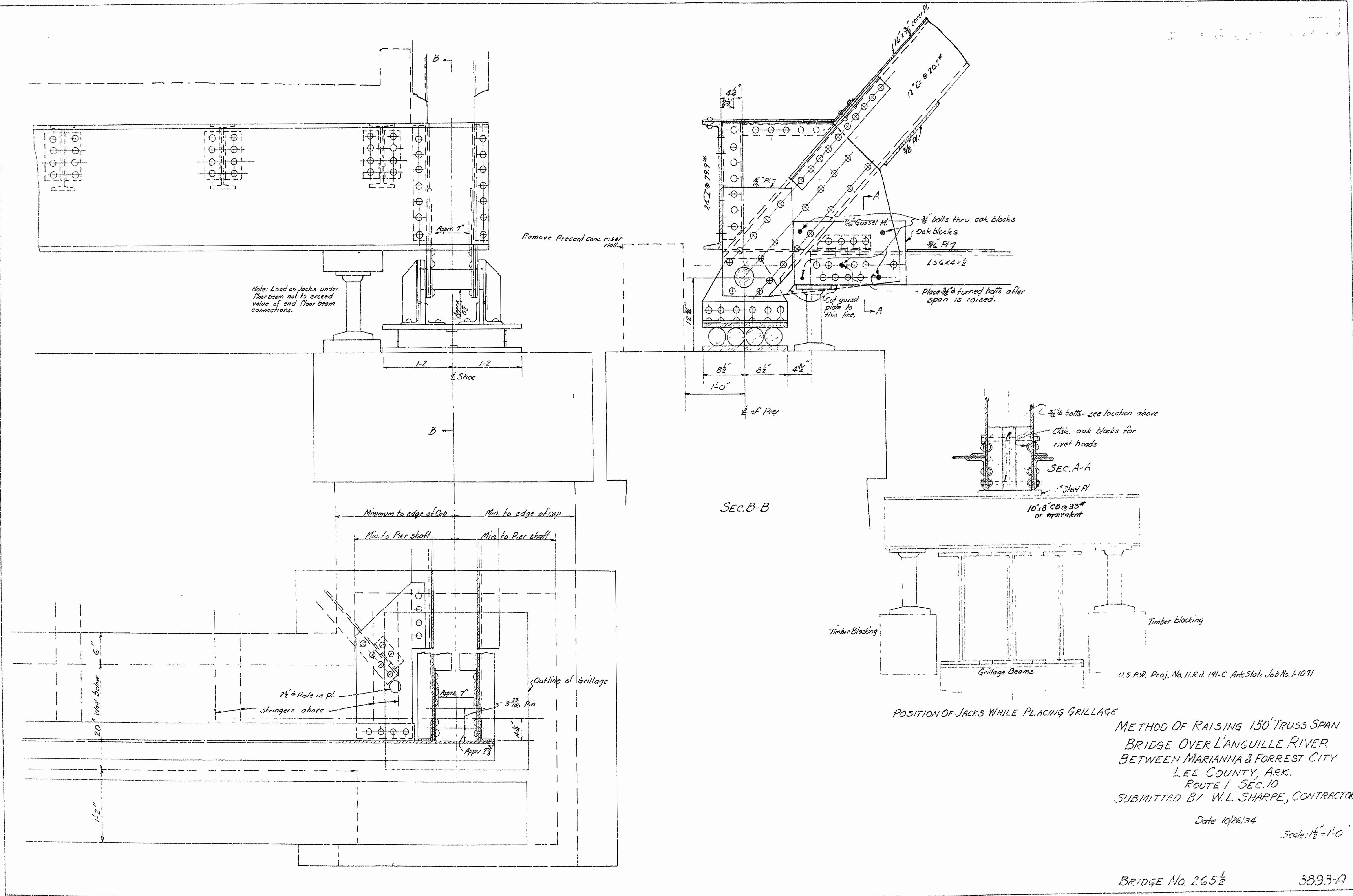
DETAILS OF FLARED APPROACH SPANS AND CHANGES AT PIERS
BRIDGE OVER LANGUILLE RIVER
BETWEEN MARIANNA & FORREST CITY
LEE COUNTY

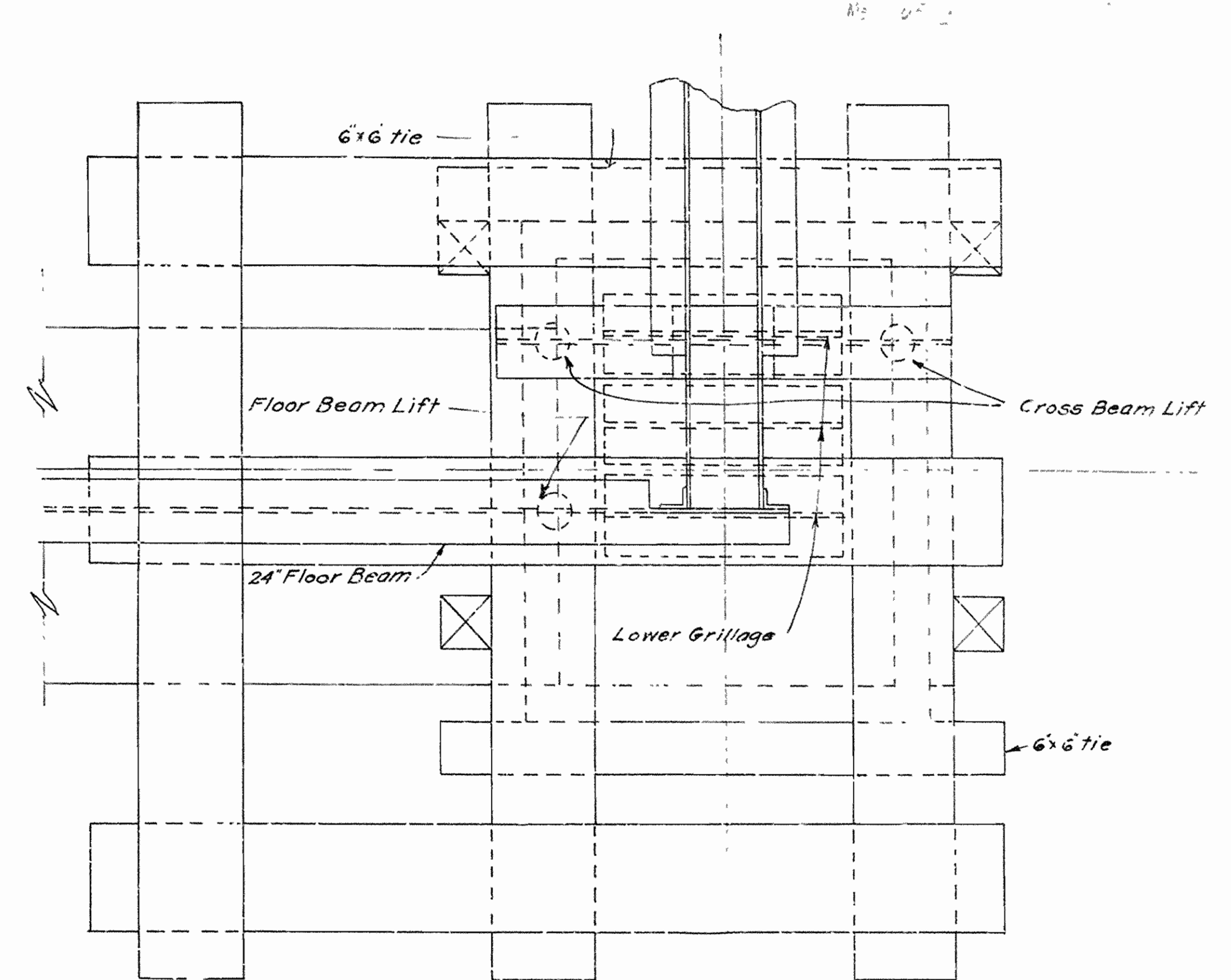
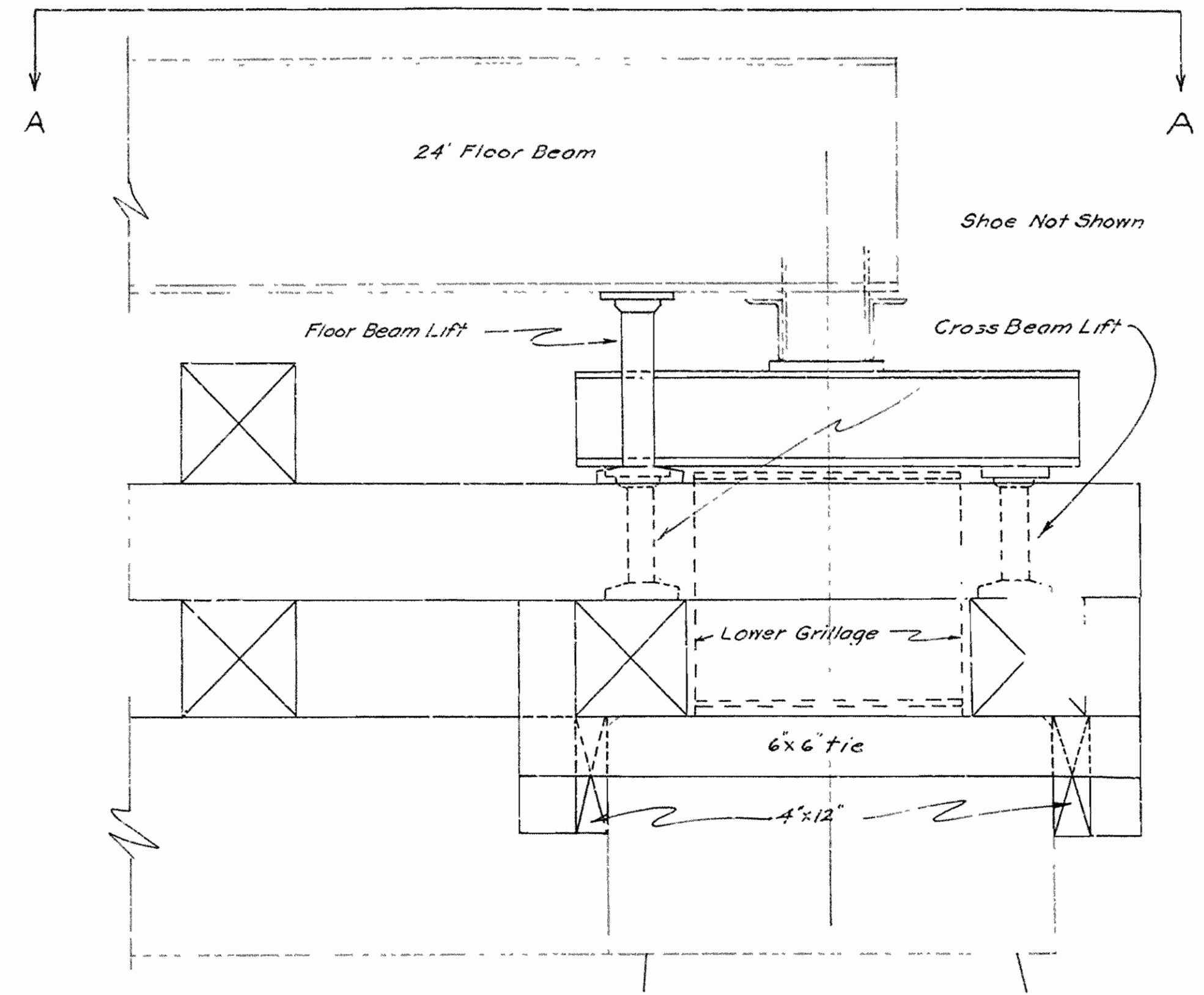
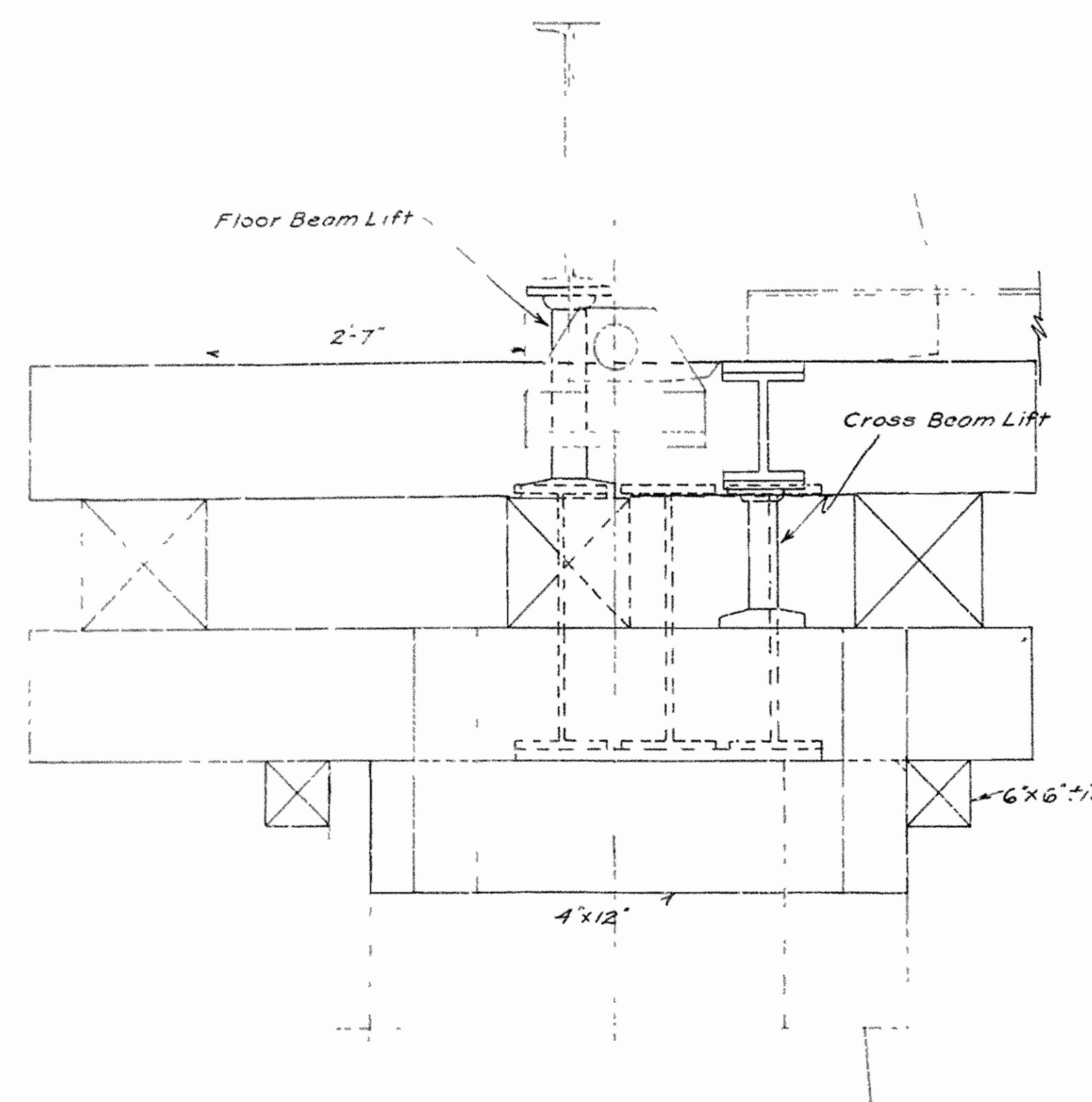
ROUTE 1 SEG. 10
ARKANSAS STATE HIGHWAY COMMISSION
LITTLE ROCK, ARK.

Drawn By: L.P.C. Date: 8-21-34
Traced By: B.V. Date: 8-22-34
Checked By: Date:
BRIDGE No. 265 1/2 DRAWING No. 3893

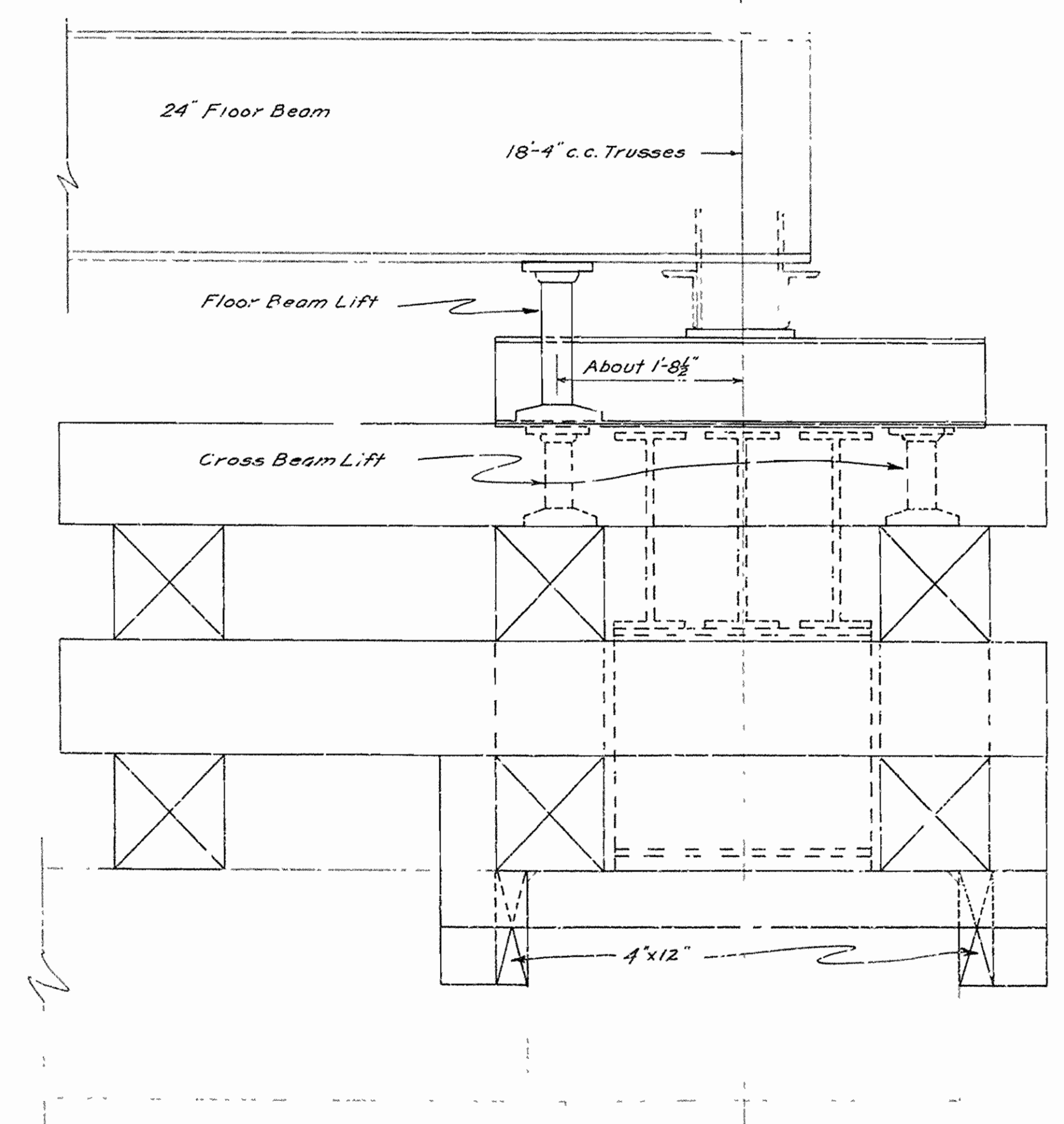
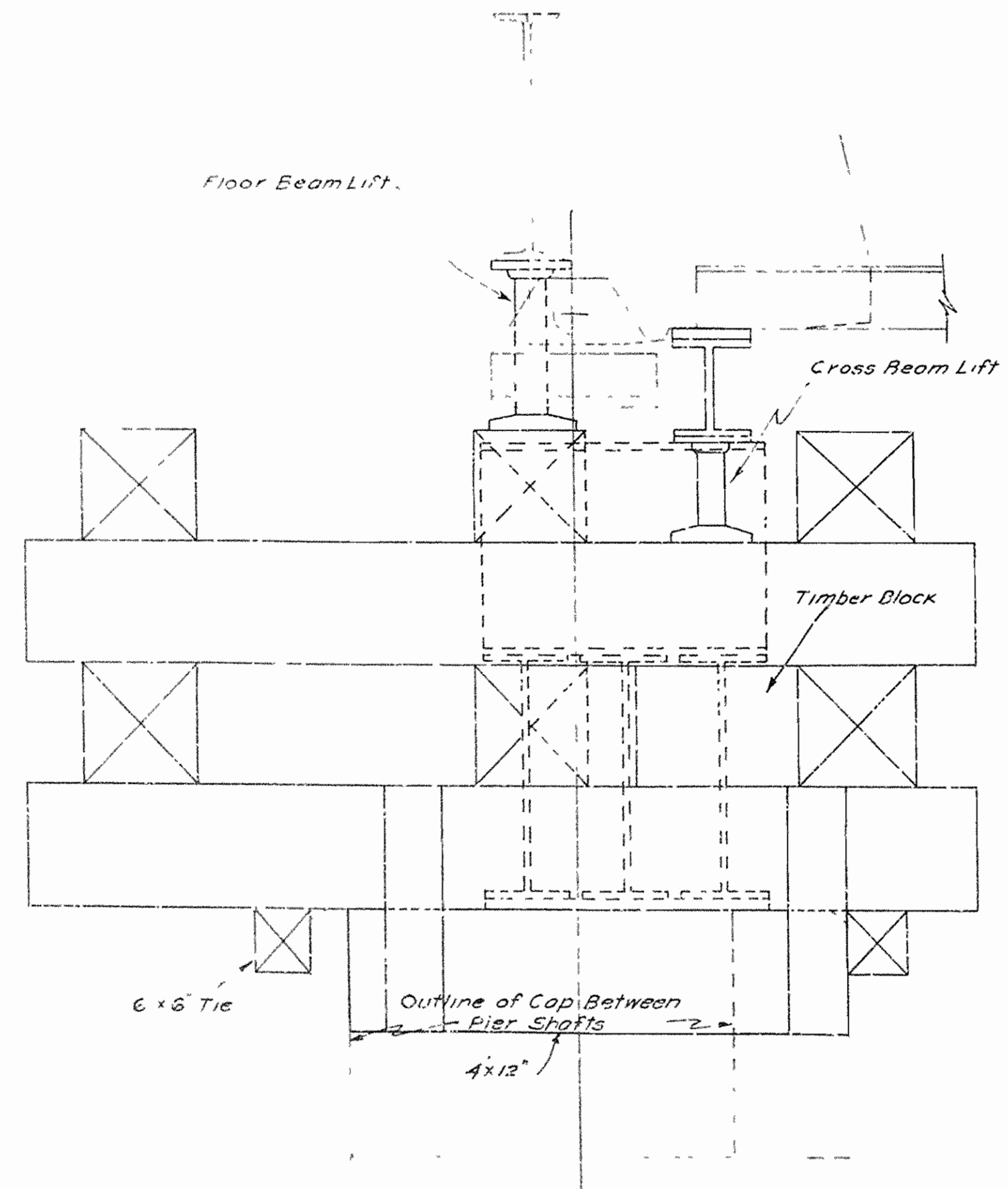
Check exact dimensions to holes for 1/2" bolts on each truss bearing. Furnish 4-1/2" x 0-8" bolts, 2 1/2" nuts, with 4-1/2" felt washers for e.p. end. & 4-1/2" x 0-8" threaded 28 for fix end

W. J. ...
BRIDGE ENGINEER





PLAN A-A



METHOD OF RAISING 150' SPAN
 L'ANGUILLE RIVER BRIDGE
 BETWEEN MARIANNA & FORREST CITY
 Drawn by L.P.C.
 Traced by B.V. 11/12/34

BRIDGE NO. 265 1/2

NRS 191-C
State Job 1-1091